

16 cápsulas | capsules | gélules

Code: PT0148



5 600341 000254 >

Ampicilina_Caps_500_EM_v1.1_092017



16 cápsulas | capsules | gélules

16 cápsulas | capsules | gélules









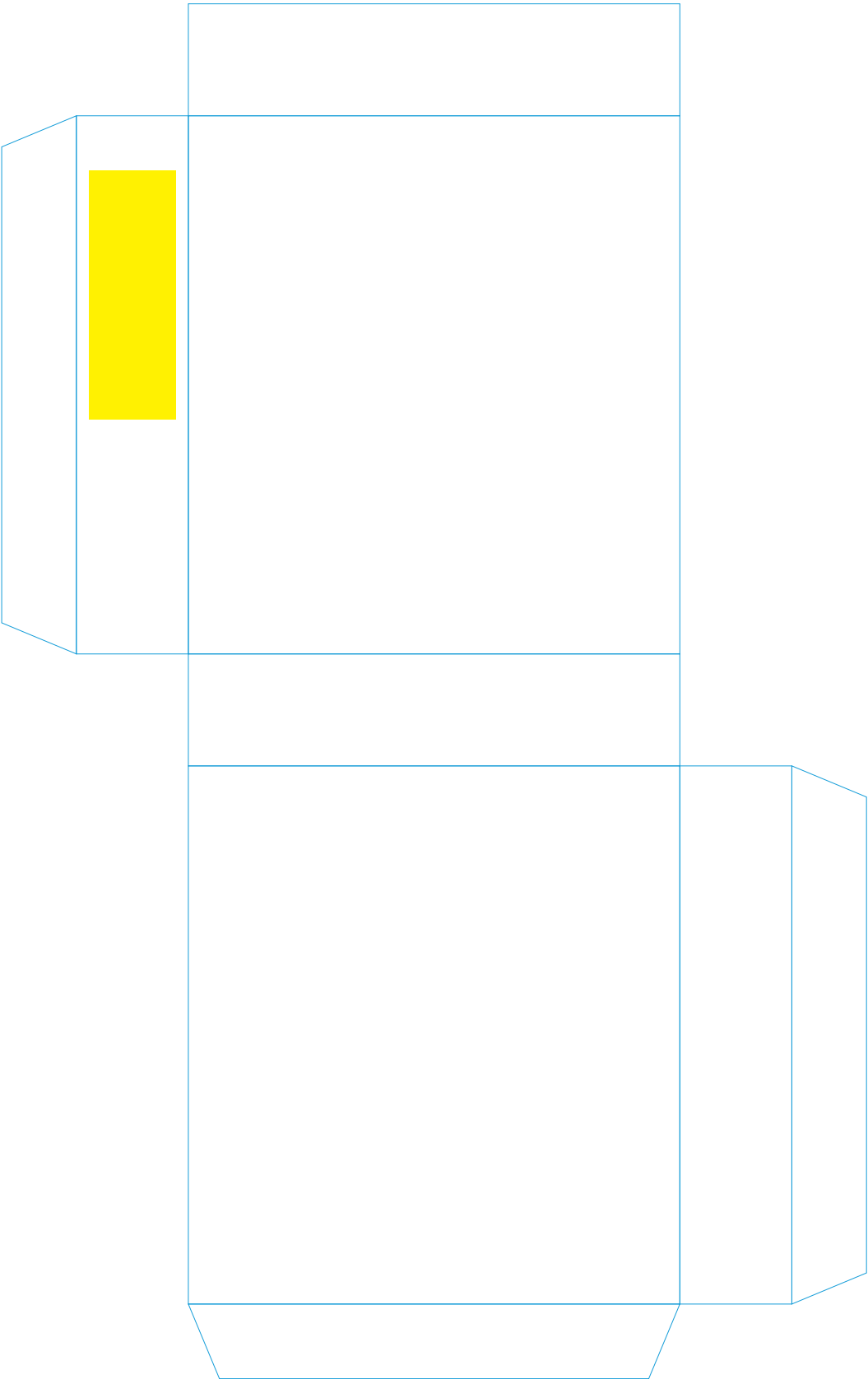
velvetmed
Healthcare Solutions







www.velvet-med.pt
geral@velvet-med.pt
+351 239 811 431
Casa Meada, Lote 4,
3040 - 584
Coimbra - **Portugal**

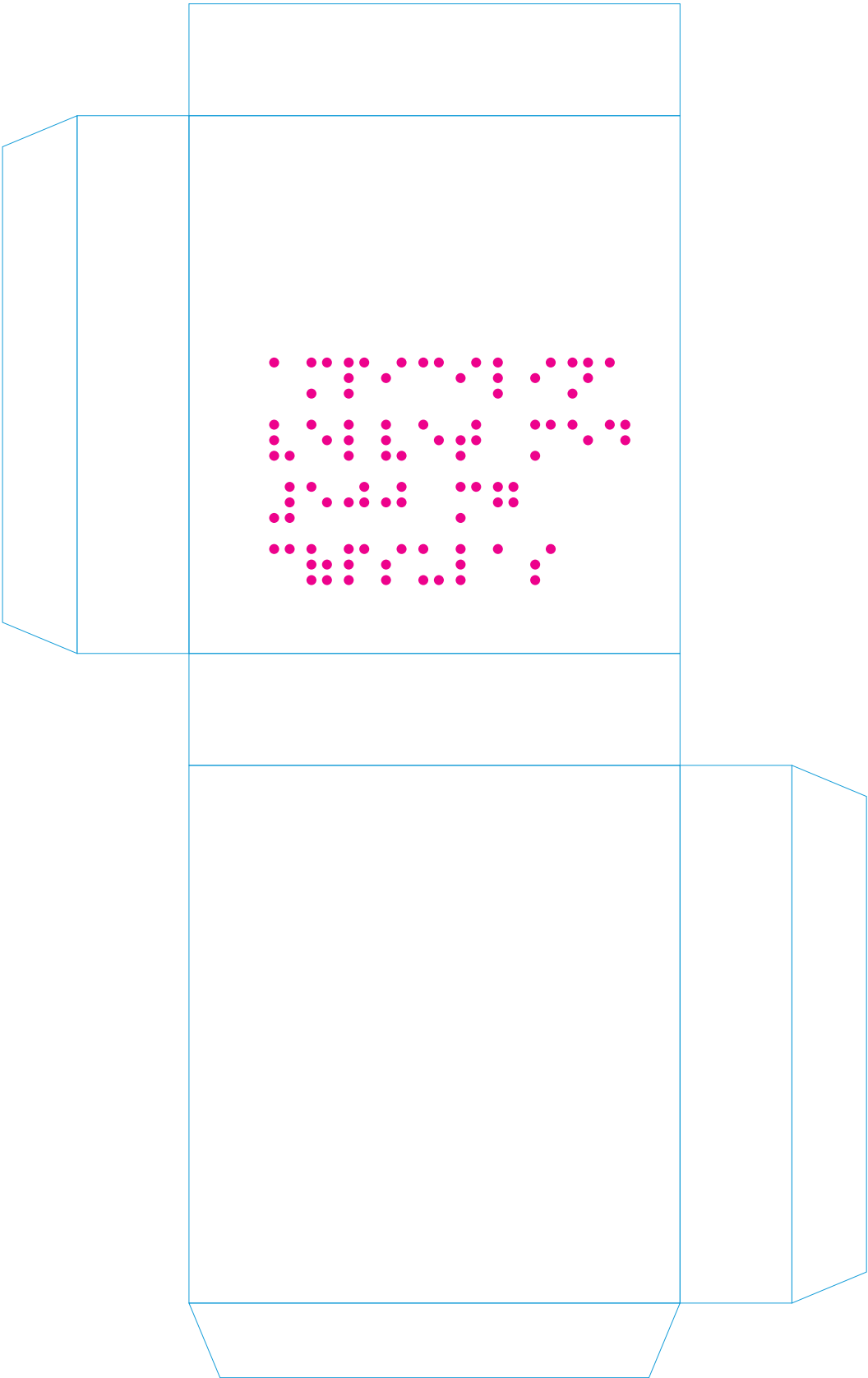
Ampicilina | Ampicillin | Ampicilline
Velvet Med® 500 mg







16 cápsulas | capsules | géúles

		Printing Specifications					Revisions
Obs.: Braille Text (vertical, bottom to top): ampicilina velvet med #500 mg cápsulas	COLOR	CMYK	x	PANTONES	x	PANTONE CODE 648 C 247 C  	Project Manager
	FX	INDICATIVE COLORS NOT FOR PRINTING: Varnish Reserve:  Braille Emboss: 			INDICATIVE COLOR - NOT FOR PRINTING To be implemented as per manufacturer specifications Cutter Guide: 		Technical Manager
	PAPER	GRAMMAGE Paperboard 330-359 gsm Cyber XL Board of GC1 type	FINISHING Semi-Varnished Dim: NOT fully varnished nor fully matt finished		OTHER SPECS Dim: 86,5mm x 18mm x 79mm		File Version / Date: Ampicilina_Caps_500_EM_v1.1_092017 04-09-2017



<div> healthcare solutions</div>		Printing Specifications						Revisions
Obs.: Braille Text (vertical, bottom to top): ampicilina velvet med #500 mg cápsulas	COLOR	CMYK	x	PANTONES	x	PANTONE CODE 648 C 247 C  		Project Manager
	FX	INDICATIVE COLORS NOT FOR PRINTING: Varnish Reserve:  Braille Emboss:  Cutter Guide: 				INDICATIVE COLOR - NOT FOR PRINTING To be implemented as per manufacturer specifications		Technical Manager
	PAPER	GRAMMAGE Paperboard 330-360 gsm Cyber XL Board of GCT type	FINISHING Semi-Varnished NOT fully varnished nor fully matt finished		OTHER SPECS Dim: 86,5mm x 18mm x 79mm		File Version / Date: Ampicilina_Caps_500_EM_v1.1_092017 04-09-2017	



<div> healthcare solutions</div>		Printing Specifications					Revisions
Obs.: Braille Text (vertical, bottom to top): ampicilina velvet med #500 mg cápsulas	COLOR	CMYK	x	PANTONES	x	PANTONE CODE 648 C 247 C  	Project Manager
	FX	INDICATIVE COLORS NOT FOR PRINTING: Varnish Reserve:  Braille Emboss: 			INDICATIVE COLOR - NOT FOR PRINTING To be implemented as per manufacturer specifications Cutter Guide: 		Technical Manager
	PAPER	GRAMMAGE Paperboard 330-350 gsm Cyber XL Board of GCT type	FINISHING Semi-Varnished NOT fully varnished nor fully matt finished		OTHER SPECS Dim: 86,5mm x 18mm x 79mm		File Version / Date: Ampicilina_Caps_500_EM_v1.1_092017 04-09-2017

Ampicillin Ampicilline

500 mg



16 cápsulas | caps



Amicillina / Ampicillin /
Velvet Med® 500 mg

16 cápsulas | caps